

# Elk & Wapiti Velvet Grading Guidelines

ELK / WAPITI SUPREME



## ELK / WAPITI SUPREME

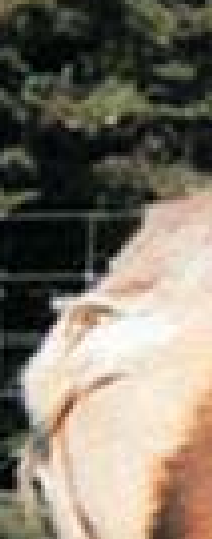
Minimum Weight	4 kg
Minimum Circumference	Must exceed 20 cm at all points on the beam
Must have Indentation	2.5 cm to 10 cm (note 1)

## HYGIENE

Remember - velvet is a health food and should be handled and stored in a clean and hygienic manner.

## ANIMAL WELFARE

Velvet removal is a Controlled Surgical Procedure and may only be performed by a Vet, or an approved person under the National Velvetting Standards Body programme. Phone 04 473 4500 for more information.  
Illegal velvet removal is an offence under the Animal Welfare Act 1999.



SHORT



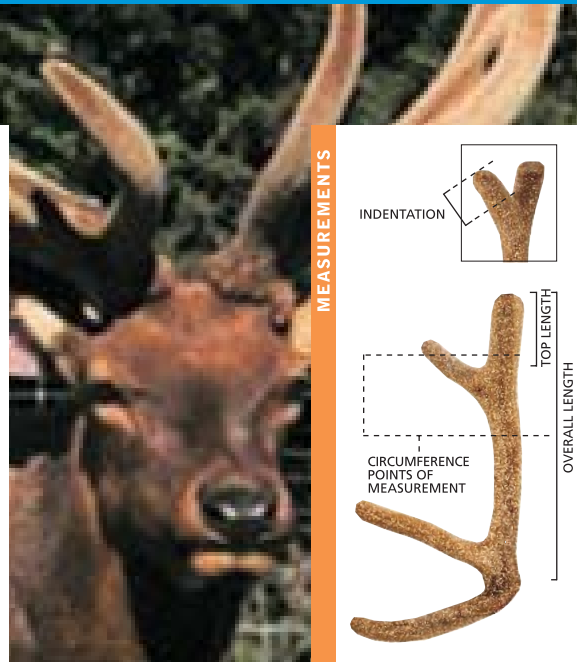
MEDIUM



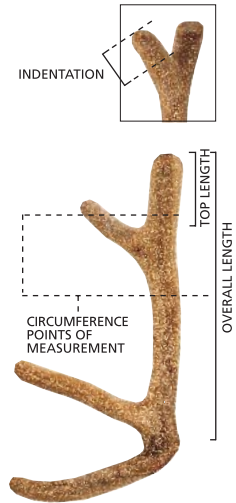
LONG TOP



OUTGROWN



MEASUREMENTS



	Minimum Weight		Circumference Minimum			Top Length Maximum			Overall Length Maximum			Indentation (note 1)			Grade					
	EW1	EW2	EW3	EW4	EW1S	EW2S	EW3S	EW4S	EW1M	EW2M	EW3M	EW4M	EW1LT	EW2LT	EW3LT	EW4LT	EW1	EW2	EW3	EW4
Minimum Weight	3 kg (note 2)	2.5 kg (note 2)	2 kg (note 2)	1.5 kg	21 cm (note 3)	21 cm	19 cm	16 cm	21 cm (note 3)	21 cm	19 cm	16 cm	21 - 31 cm (note 3)	21 - 31 cm	19 - 29 cm	16 - 26 cm	EW Dam 1	EW Dam 1	EW Dam 1	EW Dam 2
Circumference Minimum	19 cm	18 cm	16 cm	14.5 cm	65 cm (Refer note 4)	60 cm (Refer note 4)	55 cm	50 cm	65 cm (Refer note 4)	60 cm (Refer note 4)	55 cm	50 cm	(Refer note 4)	(Refer note 4)	None	None	EW Dam 1	EW Dam 1	EW Dam 1	EW Dam 2
Top Length																				
Overall Length																				
Indentation																				
Grade																				

**Notes**  
 EW velvet may be downgraded for poor conformation including excessive overall length regardless of time of cutting.  
 (1) Indentation is measured along the length of the royal from the tip of the royal to the bottom of the fork.  
 (2) Recommended Minimum Weight only.  
 (3) Top Length for EW1 increases in proportion with circumference. Examples: Circumference of 19 cm = Top Length of 21 cm. Circumference of 19.5 cm = Top Length of 21.5 cm.  
 (4) Slight indenting in EW Short, Medium and Long Top may not necessarily be downgraded, but must be in balance and not overgrown.  
 (5) Elk/Wapiti Outgrown contains EW grade velvet which exceeds permitted indentation or maximum top lengths. This grade may be divided when offered for sale to account for different styles of EWOG velvet within the grade.

## Notes on measurements

**Circumference**  
 Circumference is taken as the lesser measurement of the circumference of the beam measured on the clear beam:

- immediately above the trez tyne
- midway between the top of the stick and the top of the inside cut.

'Clear' means that the measurement is not to be taken where webbing from a tyne or other growth on the antler would interfere with the measurement. The objective is to get a measurement representative of the average circumference of the beam.

**Top Length**  
 Top length is measured between the top of the stick and the bottom of the fork where the trez meets the beam.

**Overall Length**  
 Overall length is measured from the top of the stick to the top of the inside cut.

**Indentation**  
 Indentation is measured along the length of the longest royal from the tip of the royal to the bottom of the fork where the royal meets the beam.



Level 13, PriceWaterHouseCoopers Tower, 113-119 The Terrace, PO Box 10-702, Wellington, New Zealand.  
 Telephone +64-4-473 4500 Fax +64-4 472 5549 E-mail info@deernz.org.nz



ELK SUPREME™ is a trademark owned by the Elk and Wapiti Society of New Zealand.